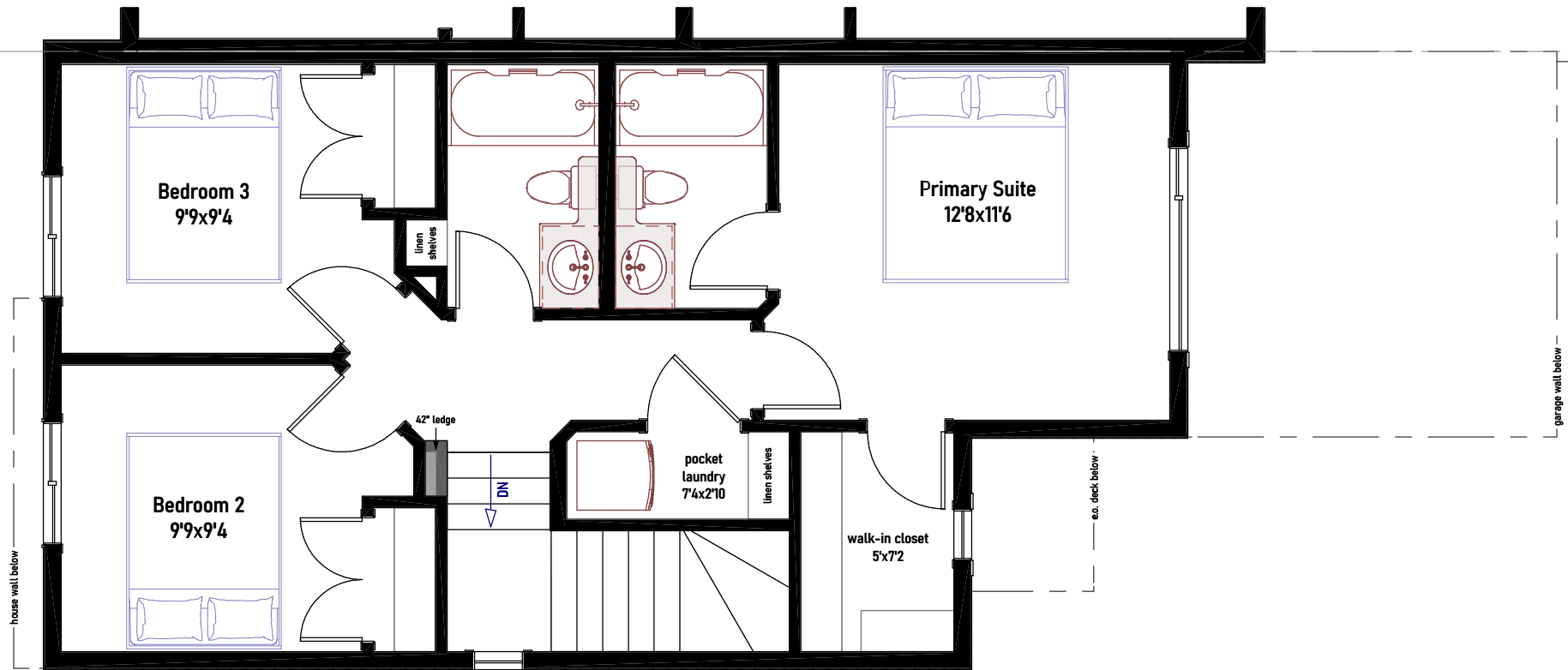


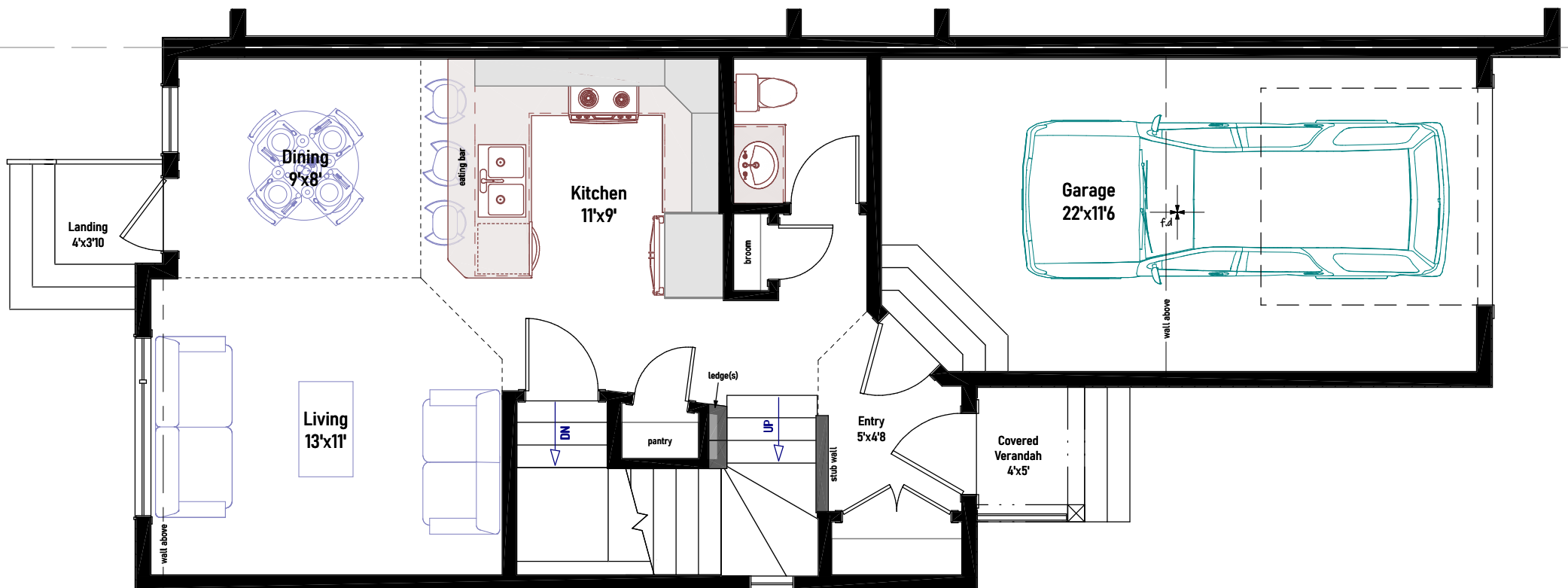
PINNACLE CLOSE

blackfalds

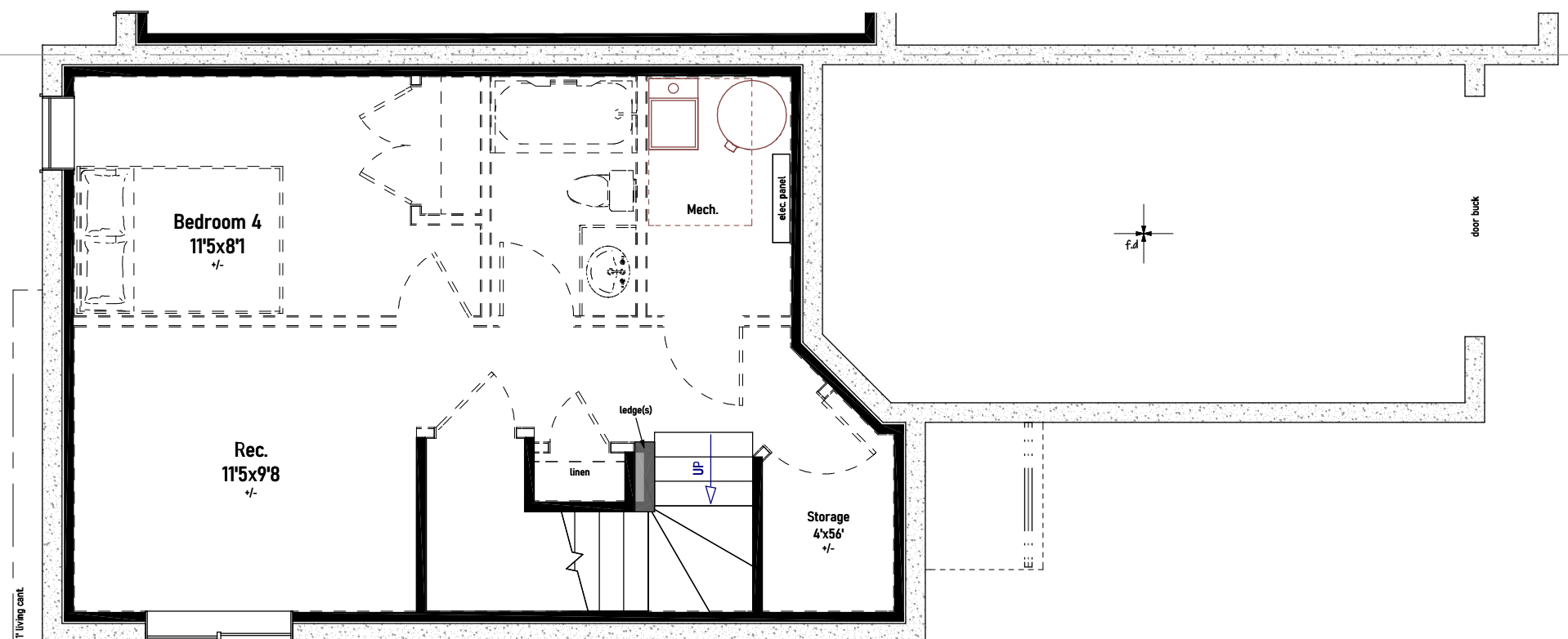
TOTAL: 1205 SQ FT



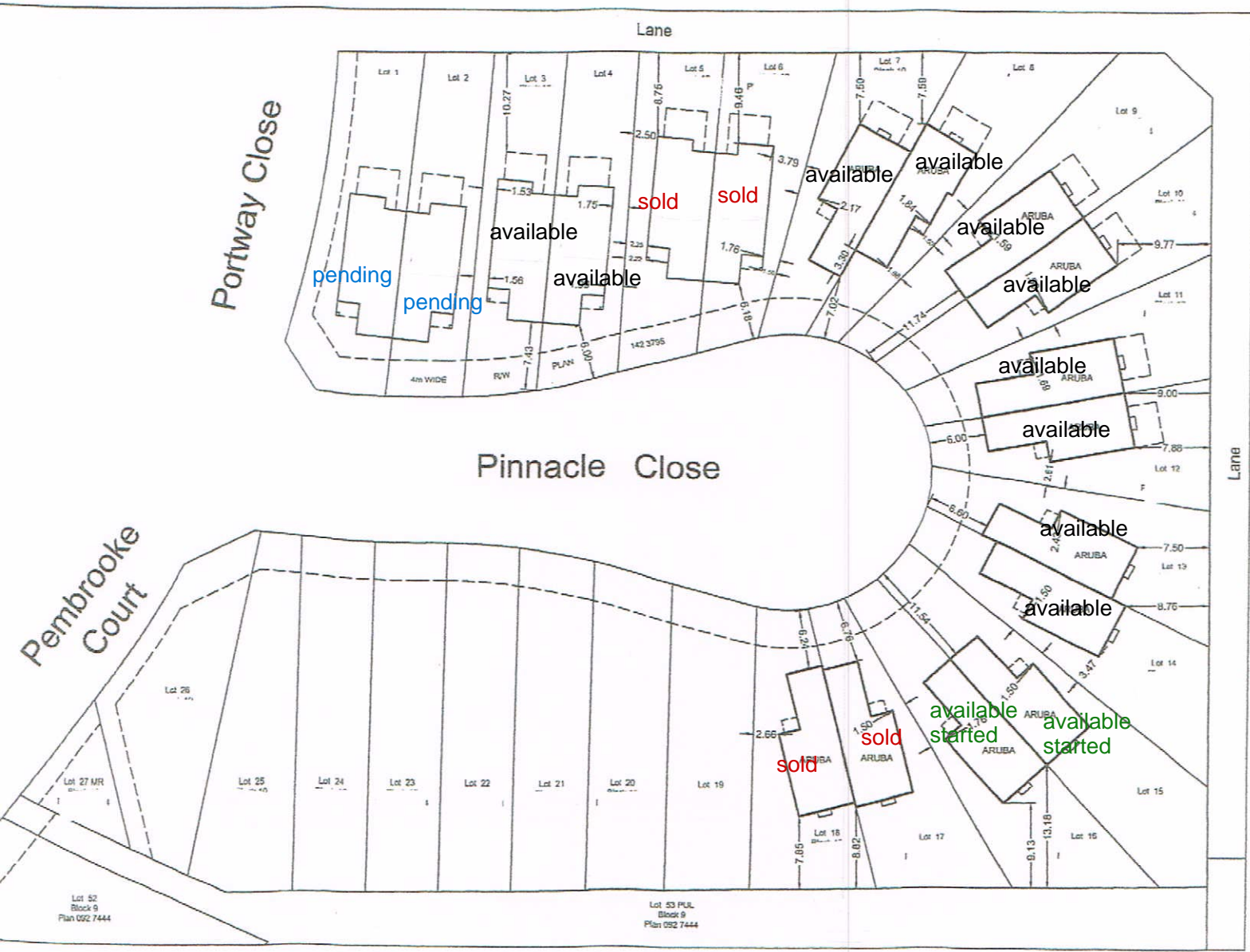
UNIT SQFT - UPPER
630sq ft



UNIT SQFT - MAIN
575sq ft



UNIT SQFT - BASEMENT
developable: 375sq ft*
(*excludes understairs & mech and is to frost walls)



P.P. #8